



WINDOWS Installation Guide

Date: 2023-04-24

Level up with CYBERTEC PostgreSQL Enterprise Edition (PGEE). PGEE is a highly secure database management system with advanced enterprise features, powered by CYBERTEC's deep PostgreSQL expertise.

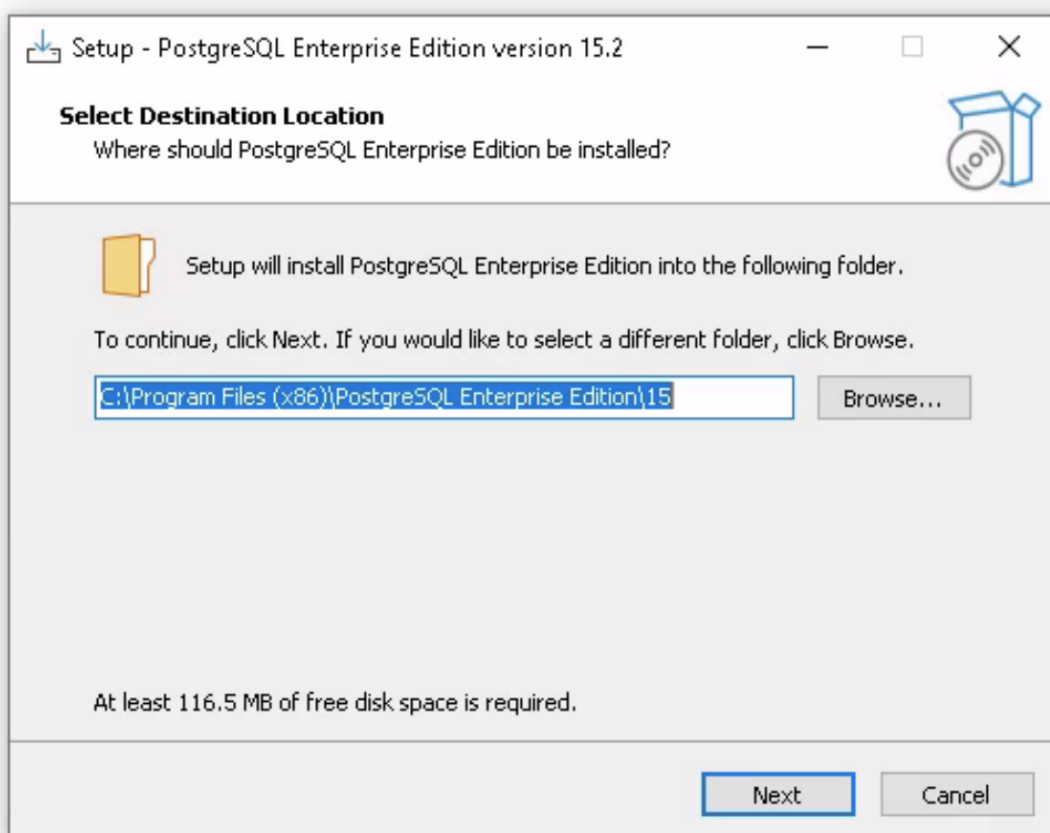
PGEE is an enhanced PostgreSQL distribution optimized for large-scale enterprise-grade operations. Its core elements include superior security as well as high performance, user-friendly monitoring and 24/7 Enterprise Support.

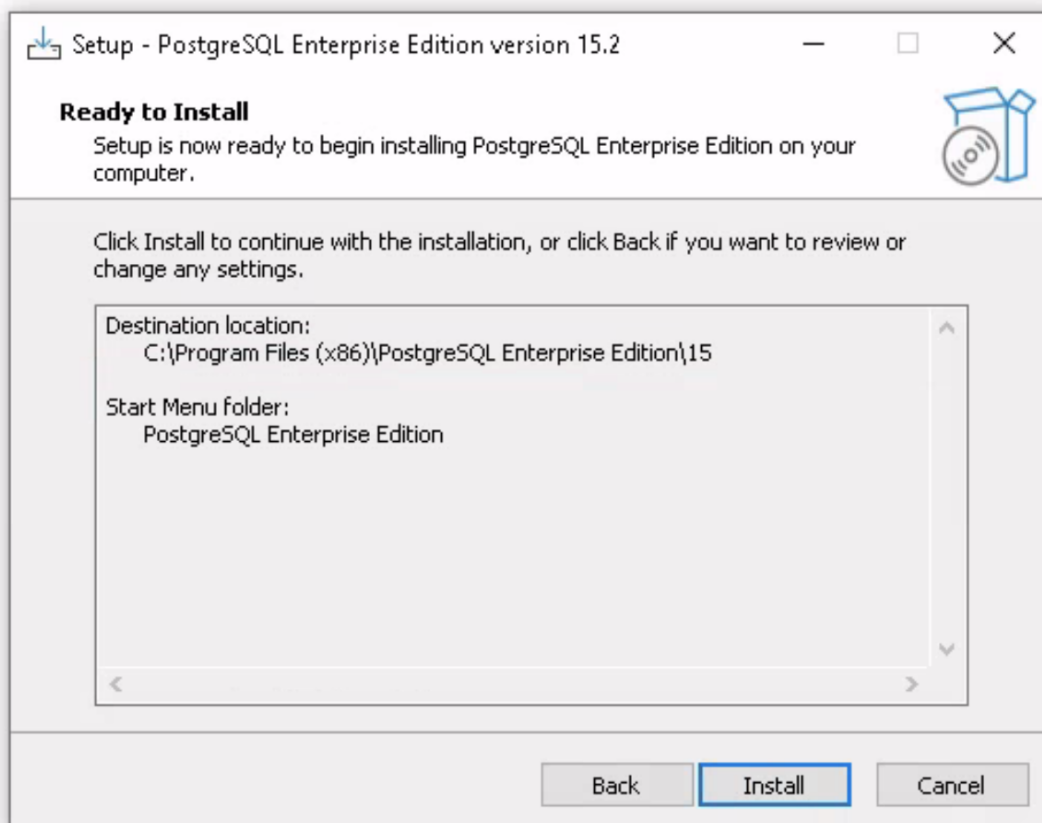
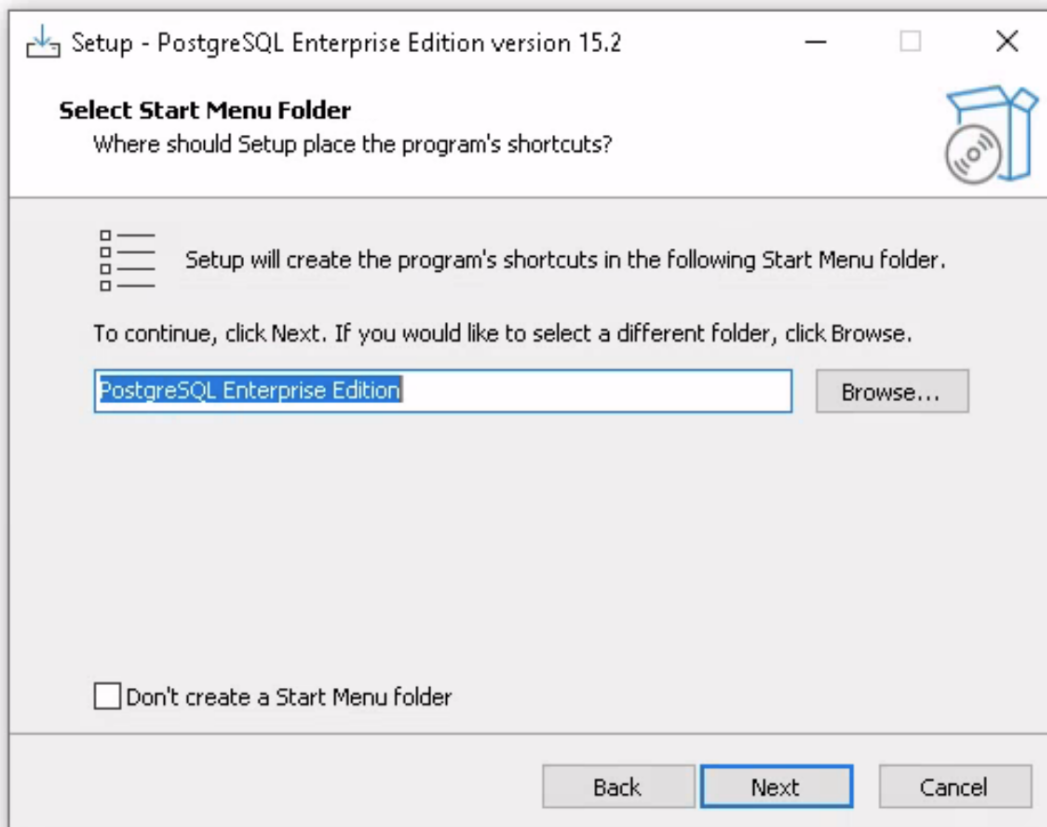
USING PGEE AND TDE ON WINDOWS

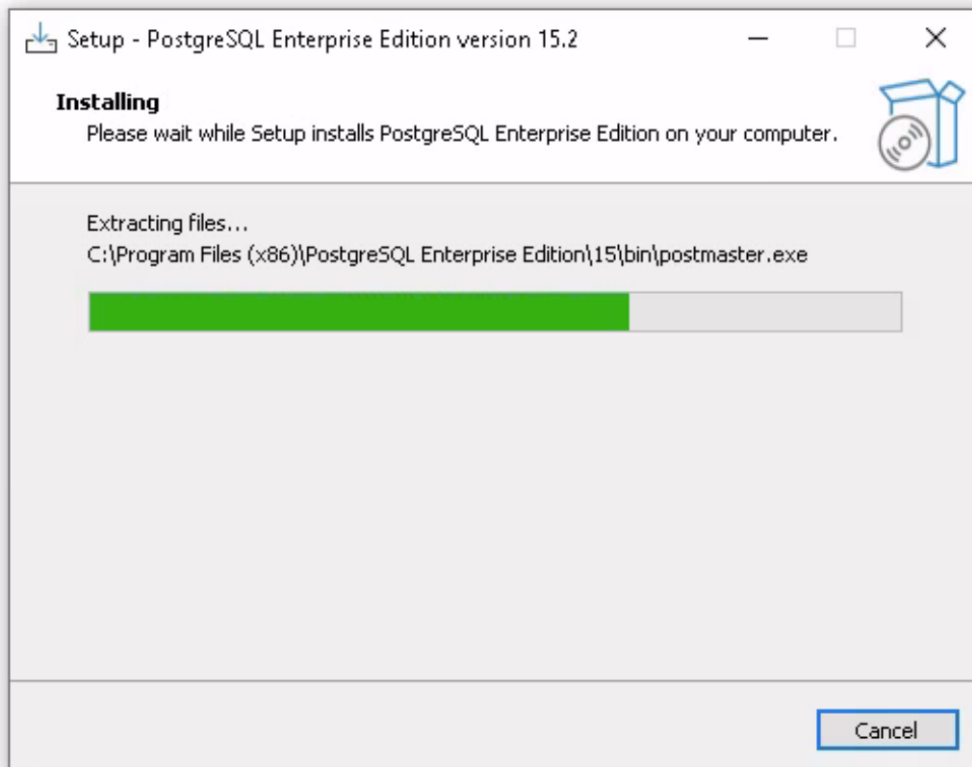
Thank you for using PostgreSQL Enterprise Edition (PGEE) fully supported on Windows. CYBERTEC provides a one-click installer that spins up an encrypted database cluster including all enterprise features provided by PGEE.

Installing PGEE

The PGEE installer is called **postgresql-ee-15.2.exe**. After starting the installer, click through the windows that pop up:







The installer generates a random encryption key and creates a database cluster using that key. The data directory is located in **AppData\Local\PostgreSQL-EE** of the user running the installer.

```

Administrator: Windows PowerShell

Directory: C:\Users\cybertec\AppData\Local

Mode                LastWriteTime         Length Name
----                -
d-----          21/04/2023   17:14         PostgreSQL-EE
Creating encryption key ...

Creating data directory ...
The files belonging to this database system will be owned by user "cybertec".
This user must also own the server process.

The database cluster will be initialized with locale "English_United Kingdom.1252".
The default database encoding has accordingly been set to "WIN1252".
The default text search configuration will be set to "english".

Data page checksums are disabled.
Data encryption is enabled.

creating directory C:/Users/cybertec/AppData/Local/PostgreSQL-EE/15-main ... ok
creating subdirectories ... ok
selecting dynamic shared memory implementation ... windows
selecting default max_connections ... 100
selecting default shared_buffers ... 128MB
selecting default time zone ... Europe/Berlin
creating configuration files ... ok
running bootstrap script ... ok
performing post-bootstrap initialization ... ok
syncing data to disk ... ok

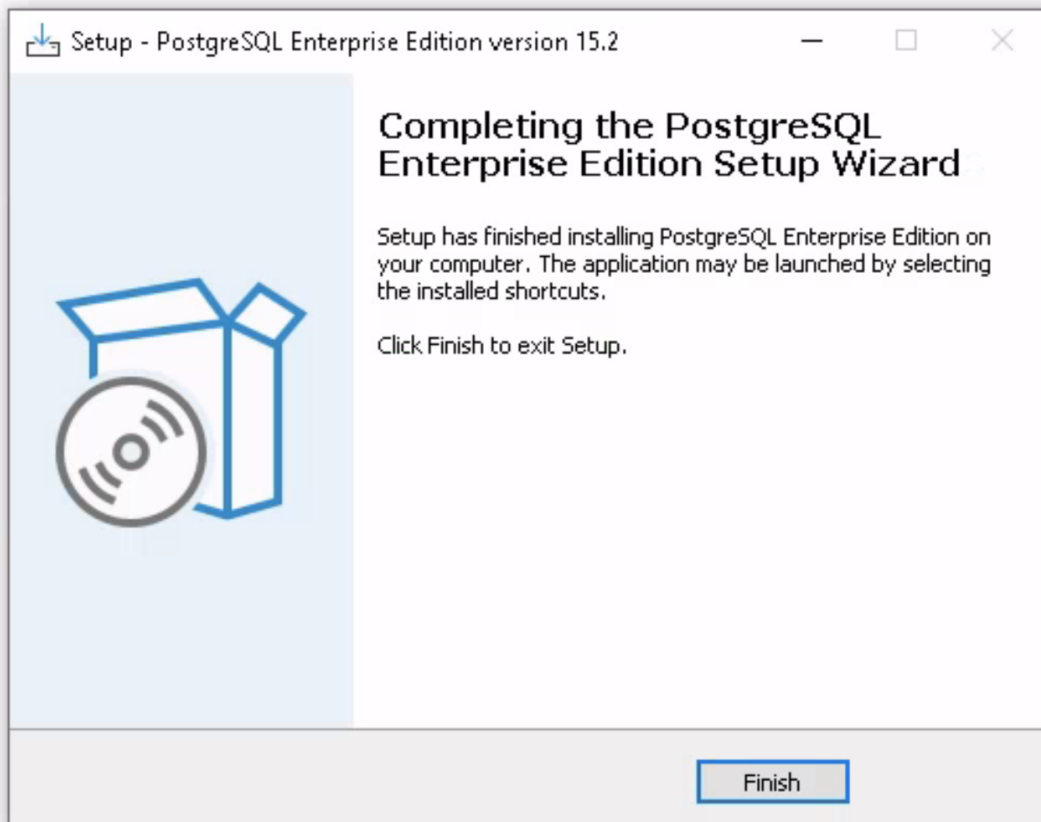
initdb: warning: enabling "trust" authentication for local connections
initdb: hint: You can change this by editing pg_hba.conf or using the option -A, or --auth
-local and --auth-host, the next time you run initdb.

Success. You can now start the database server using:

    "C:\Program Files (x86)\PostgreSQL Enterprise Edition\15\bin\pg_ctl" -D
    "C:\Users\cybertec\AppData\Local\PostgreSQL-EE\15-main" -l logfile start

Creating service ...
Starting service ...
Press Enter to finish the installation.
  
```

Hit **Enter** to close the window.



Congratulations, you've just installed PGEE on WINDOWS.

RUNNING PGEE

To access PostgreSQL Enterprise Edition, start **psql** or connect using pgAdmin4:

```
Windows PowerShell
PS C:\Program Files (x86)\PostgreSQL Enterprise Edition\15> bin\psql postgres
psql (15.2_EE_1.2.0)
Type "help" for help.

postgres=# select version();
               version
-----
 PostgreSQL 15.2_EE_1.2.0 on x86_64-w64-mingw32, compiled by gcc.exe (Rev10, Built by MSYS2 project) 12.2.0, 64-bit
(1 row)

postgres=#
```

The server is running on port **5432**.

Contact

CYBERTEC PostgreSQL International GmbH
Römerstraße 19
2752 Wöllersdorf
Austria

+43 (0) 2622 93022-0
sales@cybertec-postgresql.com
www.cybertec-postgresql.com